



DELIVERY PLAN
A full Plan, meeting 6 challenges through a comprehensive action plan. To download a PDF of this [click here](#)



LOCAL BAPS
Underpinning the Regional Plan are a wide variety of LBAPs. To view links to LBAPs [click here >](#)

Reviewing the Region's Natural Areas

During 2003 the EEBF undertook a project to consider the Region's Natural Areas in order to identify the priority habitats that would help secure the Region's quota of UK BAP targets.

Priority habitats

This process identified seven priority target habitats:

- Lowland grass and heath [more >](#)
- Freshwater [more >](#)
- Hedges [more >](#)
- Semi-natural woodland [more >](#)
- Coastal [more >](#)
- Reed beds and Fens [more >](#)
- Arable cereal margin [more >](#)

These targets were adopted as part of the Regional Spatial Strategy (RSS) in 2004 and currently appear in the revision to the RSS, dated May 2008. [Click here](#) to view a summary of these targets.

Regional National Countryside Characteristics Areas



1. Lowland grass and heath

[Click here to view map](#)

UK HAPs (see [Glossary](#)) included: lowland calcareous grassland; lowland dry acid grassland; lowland meadows; coastal and floodplain grazing marsh; and lowland heath.

Maintain: 100% of existing resource
Restore: 100% in sympathetic management by 2010
Create: 2385 ha by 2010
Target Achievement:

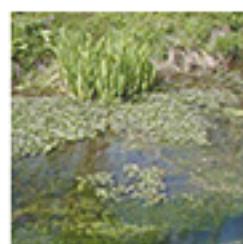


2. Freshwater

[Click here to view map](#)

UK HAPs included: aquifer-fed, naturally fluctuating water bodies; chalk rivers; eutrophic standing waters (generally high in nutrients); and mesotrophic lakes (usually low in nutrients).

Maintain: 100% of existing resource
Restore: Initiate restoration of water quality, flow and level by 2010
Create: N/A
Target Achievement:



3. Hedges

[Click here to view map](#)

UK HAPs included: ancient and/or species rich hedgerows

Maintain: No loss of existing overall resource
Restore: 100% in sympathetic management by 2010
Create: 200km by 2010
Target Achievement:



4. Semi-natural woodland

[Click here to view map](#)

UK HAPs included: lowland wood-pasture and parkland; lowland mixed deciduous woodland (most ancient woodland); and wet woodland. Note that this last target does not include lowland beech and yew woodland. Climate change evidence for the East of England indicates that beech will be "unsuitable" across much of the Region.

Maintain: 100% of existing resource
Restore: 1700 ha by 2010
Create: 1400 ha by 2010
Target Achievement:



5. Coastal

[Click here to view map](#)

UK HAPs included: coastal saltmarsh; coastal sand dunes; coastal vegetated shingle; maritime cliffs and slopes; mudflats; saline lagoons; and sublittoral sands and dunes.

Maintain: 100% of existing resource – but allowing dynamic natural processes
Restore: 100% in sympathetic management
Create: 2300 ha by 2010
Target Achievement:



6. Reed beds and Fens

[Click here to view map](#)

UK HAPs included: fens; reedbeds; and lowland raised bogs.

Maintain: 100% of existing resource, but allowing dynamic natural processes
Restore: Identify key potential sites from LBAPs
Create: 2000 ha by 2010
Target Achievement:



7. Arable cereal margin

[Click here to view map](#)

UK HAPs included: cereal field margins.

Maintain: No loss of overall resource
Restore:
Create: 3500 ha by 2010
Target Achievement: Completion 2005



[Back to top](#)